

TEST REPORT

No. : XMIN2012011792CM-01

Date : Dec 16, 2020

Page: 1 of 6

scan to see the report



XMIN2012011792CM-01

CUSTOMER NAME: ANJI YIKE DECORATION MATERIAL TECHNOLOGY CO., LTD
ADDRESS: BUILDING 1, BAMBOO INDUSTRYTECHNOLOGY
ENTREPRENEURSHIP CENTER XIAOFENG TOWN, ANJI COUNTY,
HUZHOU CITY, ZHEJIANG PROVINCE, CHINA

Sample Name : WOVEN VINYL FLOORING
Product Specification : 2m*20m
Manufacturer : ANJI YIKE DECORATION MATERIAL TECHNOLOGY CO., LTD
Material and Mark : PVC

Above information and sample(s) was/were submitted and confirmed by the client. SGS, however, assumes no responsibility to verify the accuracy, adequacy and completeness of the sample information provided by client.

SGS Ref. No. : SDFS2012007832FF-01
Date of Receipt : Dec 01, 2020
Testing Start Date : Dec 01, 2020
Testing End Date : Dec 14, 2020
Test result(s) : For further details, please refer to the following page(s)
(Unless otherwise stated the results shown in this test report refer only to the sample(s) tested)

Signed for
SGS-CSTC Standards Technical
Services Co., Ltd Xiamen Branch
Testing Center

Civi Huang
Authorized signatory



Unless otherwise agreed in writing, this document is issued by the Company subject to its General Conditions of Service printed overleaf, available on request or accessible at <http://www.sgs.com/en/Terms-and-Conditions.aspx> and, for electronic format documents, subject to Terms and Conditions for Electronic Documents at <http://www.sgs.com/en/Terms-and-Conditions/Terms-e-Document.aspx>. Attention is drawn to the limitation of liability, indemnification and jurisdiction issues defined therein. Any holder of this document is advised that information contained hereon reflects the Company's findings at the time of its intervention only and within the limits of Client's Instructions, if any. The Company's sole responsibility is to its Client and this document does not exonerate parties to a transaction from exercising all their rights and obligations under the transaction documents. This document cannot be reproduced except in full, without prior written approval of the Company. Any unauthorized alteration, forgery or falsification of the content or appearance of this document is unlawful and offenders may be prosecuted to the fullest extent of the law. Unless otherwise stated the results shown in this test report refer only to the sample(s) tested and such sample(s) are retained for 30 days only.

Attention: To check the authenticity of testing / inspection report & certificate, please contact us at telephone: (86-755) 8307 1443, or email: CN.Doccheck@sgs.com

SGS-CSTC Standards Technical Services Co., Ltd.
Xiamen Branch Testing Center Construction Material Laboratory

No.31 Xianghong Road, Xiang'an Torch Industrial Zone, Xiamen, Fujian Province, China. 361101 t (86-592) 5765857 f (86-592) 5765380 www.sgsgroup.com.cn
中国·福建·厦门·火炬(翔安)产业区翔虹路31号 邮编:361101 t (86-592) 5765857 f (86-592) 5765380 e sgs.china@sgs.com

TEST REPORT

No. : XMIN2012011792CM-01

Date : Dec 16, 2020

Page: 2 of 6

Test Result Summary

Test(s) Requested	Result(s)	Client's requirement:	Conclusion:
EN 13501-1:2018 Fire classification of construction products and building elements- Part 1: Classification using data from reaction to fire tests	Classification: B _{fl} -s1	B _{fl} -s1	Met the client's requirement.

Summary:

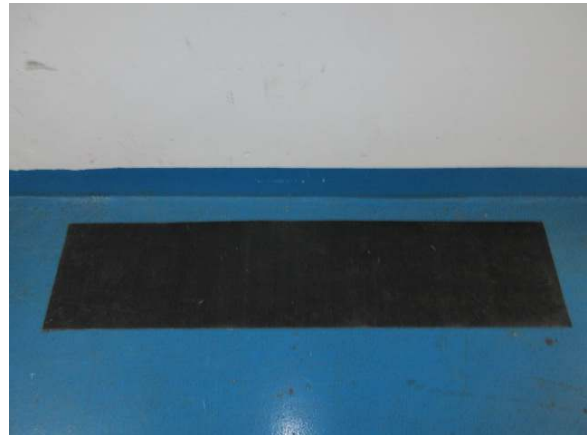
1 For further details, please refer to the following page(s).

SAMPLE INFORMATION AND PICTURES

Thickness of test specimen: About 2.8mm
 Density of test specimen: About 3.20kg/m²



Sample face



Sample back



Unless otherwise agreed in writing, this document is issued by the Company subject to its General Conditions of Service printed overleaf, available on request or accessible at <http://www.sgs.com/en/Terms-and-Conditions.aspx> and, for electronic format documents, subject to Terms and Conditions for Electronic Documents at <http://www.sgs.com/en/Terms-and-Conditions/Terms-e-Document.aspx>. Attention is drawn to the limitation of liability, indemnification and jurisdiction issues defined therein. Any holder of this document is advised that information contained hereon reflects the Company's findings at the time of its intervention only and within the limits of Client's Instructions, if any. The Company's sole responsibility is to its Client and this document does not exonerate parties to a transaction from exercising all their rights and obligations under the transaction documents. This document cannot be reproduced except in full, without prior written approval of the Company. Any unauthorized alteration, forgery or falsification of the content or appearance of this document is unlawful and offenders may be prosecuted to the fullest extent of the law. Unless otherwise stated the results shown in this test report refer only to the sample(s) tested and such sample(s) are retained for 30 days only.

Attention: To check the authenticity of testing / inspection report & certificate, please contact us at telephone: (86-755) 8307 1443, or email: CN.Doccheck@sgs.com

SGS-CSTC Xi'an Branch
 Xi'an Branch Testing Center Commercial Construction Material Laboratory

No.31 Xianghong Road, Xiang'an Torch Industrial Zone, Xiamen, Fujian Province, China. 361101 t (86-592) 5765857 f (86-592) 5765380 www.sgsgroup.com.cn
 中国·福建·厦门·火炬(翔安)产业区翔虹路31号 邮编:361101 t (86-592) 5765857 f (86-592) 5765380 e sgs.china@sgs.com

TEST REPORT

No. : XMIN2012011792CM-01

Date : Dec 16, 2020

Page: 3 of 6

TESTS AND RESULTS

Test Conducted:

This test is conducted as per EN 13501-1:2018 Fire classification of construction products and building elements-Part 1: Classification using data from reaction to fire tests.

And the test methods as following:

1. EN ISO 9239-1:2010 Reaction to fire tests for floorings-Part 1: Determination of the burning behaviour using a radiant heat source.
2. EN ISO 11925-2:2020 Reaction to fire tests-Ignitability of building products subjected to direct impingement of flame-Part 2: Single-flame source test.

Mounting and fixing (For EN ISO 9239-1:2010):

Fibre cement board meets the requirement of EN13501-1 of Class A2-s1,d0, with its density about 1800kg/m³, thickness about 8mm, is as the substrate.

The specimens were fixed mechanically to the substrate.

Test Results:

Test method	Parameter	Number of tests	Results
EN ISO 9239-1:2010	The mean value for the critical heat flux (CHF) from the same orientation	3	9.9 kW/m ²
	Smoking measurement Integrated smoke value		103.6 %xmin
	Comments and Observation		Charring
EN ISO 11925-2:2020 Exposure = 15 s	$F_s \leq 150$ mm within 20 s	6	Yes

Remark:

- 1). Above value is the mean value for the critical flux (CHF and/or HF-30) from the three same orientation specimens.



Unless otherwise agreed in writing, this document is issued by the Company subject to its General Conditions of Service printed overleaf, available on request or accessible at <http://www.sgs.com/en/Terms-and-Conditions.aspx> and, for electronic format documents, subject to Terms and Conditions for Electronic Documents at <http://www.sgs.com/en/Terms-and-Conditions/Terms-e-Documents.aspx>. Attention is drawn to the limitation of liability, indemnification and jurisdiction issues defined therein. Any holder of this document is advised that information contained hereon reflects the Company's findings at the time of its intervention only and within the limits of Client's instructions, if any. The Company's sole responsibility is to its Client and this document does not exonerate parties to a transaction from exercising all their rights and obligations under the transaction documents. This document cannot be reproduced except in full, without prior written approval of the Company. Any unauthorized alteration, forgery or falsification of the content or appearance of this document is unlawful and offenders may be prosecuted to the fullest extent of the law. Unless otherwise stated the results shown in this test report refer only to the sample(s) tested and such sample(s) are retained for 30 days only.

Attention: To check the authenticity of testing / inspection report & certificate, please contact us at telephone: (86-755) 8307 1443, or email: CN.Doccheck@sgs.com

No.31 Xianghong Road, Xiang'an Torch Industrial Zone, Xiamen, Fujian Province, China. 361101 t (86-592) 5765857 f (86-592) 5765380 www.sgsgroup.com.cn
 中国·福建·厦门·火炬(翔安)产业区翔虹路31号 邮编:361101 t (86-592) 5765857 f (86-592) 5765380 e sgs.china@sgs.com

TEST REPORT

No. : XMIN2012011792CM-01

Date : Dec 16, 2020

Page: 4 of 6

Classification and direct field of application

This classification has been carried out in accordance with EN 13501-1:2018

Classification:

Fire behaviour		Smoke production	
B _{fl}	—	s	1

Client's requirement: B_{fl}-s1

Conclusion: The submitted sample met the client's requirement.

Remark:

The classes with their corresponding fire performance are given in Table 2.

Reaction to fire classification is based on the 7-step scale of A_{1fl} to F_{fl}, where A_{1fl} is good and F_{fl} is bad.

Statement:

The test results relate to the behaviour of the test specimens of a product under the particular conditions of the test; they are not intended to be the sole criterion for assessing the potential fire hazard of the product in use.

Warning:

This classification report does not represent type approval or certification of the product.

The test laboratory has, therefore, play no part in sampling the product for the test, although it holds appropriate references to the manufacturer's factory production control that is aimed to be relevant to the samples tested and that will provide for their traceability.



Unless otherwise agreed in writing, this document is issued by the Company subject to its General Conditions of Service printed overleaf, available on request or accessible at <http://www.sgs.com/en/Terms-and-Conditions.aspx> and, for electronic format documents, subject to Terms and Conditions for Electronic Documents at <http://www.sgs.com/en/Terms-and-Conditions/Terms-e-Document.aspx>. Attention is drawn to the limitation of liability, indemnification and jurisdiction issues defined therein. Any holder of this document is advised that information contained hereon reflects the Company's findings at the time of its intervention only and within the limits of Client's Instructions, if any. The Company's sole responsibility is to its Client and this document does not exonerate parties to a transaction from exercising all their rights and obligations under the transaction documents. This document cannot be reproduced except in full, without prior written approval of the Company. Any unauthorized alteration, forgery or falsification of the content or appearance of this document is unlawful and offenders may be prosecuted to the fullest extent of the law. Unless otherwise stated the results shown in this test report refer only to the sample(s) tested and such sample(s) are retained for 30 days only.

Attention: To check the authenticity of testing / inspection report & certificate, please contact us at telephone: (86-755) 8307 1443, or email: CN.Doccheck@sgs.com

SGS-CSTC Xiamen Branch Inspection & Testing Services
Xiamen Branch Testing Center Commercial Construction Material Laboratory

No.31 Xianghong Road, Xiang'an Torch Industrial Zone, Xiamen, Fujian Province, China. 361101 t (86-592) 5765857 f (86-592) 5765380 www.sgsgroup.com.cn
中国·福建·厦门·火炬(翔安)产业区翔虹路31号 邮编:361101 t (86-592) 5765857 f (86-592) 5765380 e sgs.china@sgs.com

TEST REPORT

No. : XMIN2012011792CM-01

Date : Dec 16, 2020

Page: 5 of 6

Table 2-Classes of reaction to fire performance for floorings

Class	Test method(s)	Classification criteria	Additional classification
A1 _{fl}	EN ISO 1182 ^a and	$\Delta T \leq 30 \text{ }^\circ\text{C}$; and $\Delta m \leq 50 \%$; and $t_f = 0$ (i.e. no sustained flaming)	-
	EN ISO 1716	$PCS \leq 2,0 \text{ MJ/kg}$ ^a and $PCS \leq 2,0 \text{ MJ/kg}$ ^b and $PCS \leq 1,4 \text{ MJ/m}^2$ ^c and $PCS \leq 2,0 \text{ MJ/kg}$ ^d	-
A2 _{fl}	EN ISO 1182 ^a or	$\Delta T \leq 50 \text{ }^\circ\text{C}$ and $\Delta m \leq 50 \%$ and $t_f \leq 20 \text{ s}$	-
	EN ISO 1716 and	$PCS \leq 3,0 \text{ MJ/kg}$ ^a and $PCS \leq 4,0 \text{ MJ/m}^2$ ^b and $PCS \leq 4,0 \text{ MJ/m}^2$ ^c and $PCS \leq 3,0 \text{ MJ/kg}$ ^d	-
	EN ISO 9239-1 ^e	Critical flux $f \geq 8,0 \text{ kW/m}^2$	Smoke production ^g
B _{fl}	EN ISO 9239-1 ^e and	Critical flux $f \geq 8,0 \text{ kW/m}^2$	Smoke production ^g
	EN ISO 11925-2 ^h : Exposure = 15 s	$F_s \leq 150 \text{ mm}$ within 20 s	-
C _{fl}	EN ISO 9239-1 ^e and	Critical flux $f \geq 4,5 \text{ kW/m}^2$	Smoke production ^g
	EN ISO 11925-2 ^h : Exposure = 15 s	$F_s \leq 150 \text{ mm}$ within 20 s	-
D _{fl}	EN ISO 9239-1 ^e and	Critical flux $f \geq 3,0 \text{ kW/m}^2$	Smoke production ^g
	EN ISO 11925-2 ^h : Exposure = 15 s	$F_s \leq 150 \text{ mm}$ within 20 s	-
E _{fl}	EN ISO 11925-2 ^h : Exposure = 15 s	$F_s \leq 150 \text{ mm}$ within 20 s	-
F _{fl}	EN ISO 11925-2 ^h : Exposure = 15 s	$F_s > 150 \text{ mm}$ within 20 s	-



SGS-CSTC Technical Services Co., Ltd.
Xiamen Branch Testing Center Construction Material Laboratory

Unless otherwise agreed in writing, this document is issued by the Company subject to its General Conditions of Service printed overleaf, available on request or accessible at <http://www.sgs.com/en/Terms-and-Conditions.aspx> and, for electronic format documents, subject to Terms and Conditions for Electronic Documents at <http://www.sgs.com/en/Terms-and-Conditions/Terms-e-Document.aspx>. Attention is drawn to the limitation of liability, indemnification and jurisdiction issues defined therein. Any holder of this document is advised that information contained hereon reflects the Company's findings at the time of its intervention only and within the limits of Client's instructions, if any. The Company's sole responsibility is to its Client and this document does not exonerate parties to a transaction from exercising all their rights and obligations under the transaction documents. This document cannot be reproduced except in full, without prior written approval of the Company. Any unauthorized alteration, forgery or falsification of the content or appearance of this document is unlawful and offenders may be prosecuted to the fullest extent of the law. Unless otherwise stated the results shown in this test report refer only to the sample(s) tested and such sample(s) are retained for 30 days only.

Attention: To check the authenticity of testing / inspection report & certificate, please contact us at telephone: (86-755) 8307 1443, or email: CN.Doccheck@sgs.com

No.31 Xianghong Road, Xiang'an Torch Industrial Zone, Xiamen, Fujian Province, China. 361101 t (86-592) 5765857 f (86-592) 5765380 www.sgs.com.cn
中国·福建·厦门·火炬(翔安)产业区翔虹路31号 邮编:361101 t (86-592) 5765857 f (86-592) 5765380 e sgs.china@sgs.com

TEST REPORT

No. : XMIN2012011792CM-01

Date : Dec 16, 2020

Page: 6 of 6

- ^a For homogeneous products and substantial components of non-homogeneous products.
- ^b For any external non-substantial component of non-homogeneous products.
- ^c For any internal non-substantial component of non-homogeneous products.
- ^d For the product as a whole.
- ^e Test duration = 30 min.
- ^f Critical flux is defined as the radiant flux at which the flame extinguishes or the radiant flux after a test period of 30 min, whichever is the lower (i.e. the flux corresponding with the furthest extent of spread of flame).
- ^g **s1** = Smoke ≤ 750 % minutes;
s2 = not s1.
- ^h Under conditions of surface flame attack and, if appropriate to the end use application of the product attack

Note: 1. The above test was carried out by SGS-CSTC Standards Technical Services Co., Ltd. Shunde Branch.
2. This Report adds conclusion, supersedes the Report No.XMIN2012011792CM dated Dec 14, 2020 issued by SGS, original report will be invalid from today.

***** End of report*****



SGS-CSTC Standards Technical Services Co., Ltd.
Shunde Branch Testing Center Commercial Construction Material Laboratory

Unless otherwise agreed in writing, this document is issued by the Company subject to its General Conditions of Service printed overleaf, available on request or accessible at <http://www.sgs.com/en/Terms-and-Conditions.aspx> and, for electronic format documents, subject to Terms and Conditions for Electronic Documents at <http://www.sgs.com/en/Terms-and-Conditions/Terms-e-Document.aspx>. Attention is drawn to the limitation of liability, indemnification and jurisdiction issues defined therein. Any holder of this document is advised that information contained hereon reflects the Company's findings at the time of its intervention only and within the limits of Client's Instructions, if any. The Company's sole responsibility is to its Client and this document does not exonerate parties to a transaction from exercising all their rights and obligations under the transaction documents. This document cannot be reproduced except in full, without prior written approval of the Company. Any unauthorized alteration, forgery or falsification of the content or appearance of this document is unlawful and offenders may be prosecuted to the fullest extent of the law. Unless otherwise stated the results shown in this test report refer only to the sample(s) tested and such sample(s) are retained for 30 days only.

Attention: To check the authenticity of testing / inspection report & certificate, please contact us at telephone: (86-755) 8307 1443, or email: CN.Doccheck@sgs.com

No.31 Xianghong Road, Xiang'an Torch Industrial Zone, Xiamen, Fujian Province, China. 361101 t (86-592) 5765857 f (86-592) 5765380 www.sgsgroup.com.cn
中国·福建·厦门·火炬(翔安)产业区翔虹路31号 邮编:361101 t (86-592) 5765857 f (86-592) 5765380 e sgs.china@sgs.com